



IN PARTNERSHIP WITH

VISPRING

Luxury Beds - London 1901

ELITE

Wake up beautifully refreshed and ready to face whatever the day brings.

For over half a Century our family business has had a special partnership with one of the worlds most renowned bed makers. Our aim is to provide the best possible sleep for our customers and know that a new bed will provide serene comfort paired with ongoing durability and support year after year.

Vispring have been crafting beds for every taste and requirement since 1901 and have never wavered from their original philosophy of using the best craftsmanship and quality materials to produce the finest beds in the world. Nothing compares.

The investment is worth making so let us start your journey to owning a perfect new Vispring bed.



Elite deep sprung divan set.

Fabric : Touch - Sky TK 2119  
Headboard : Helios

Mattress spring count: **1254\***

\*In a standard 150x200cm Kingsize

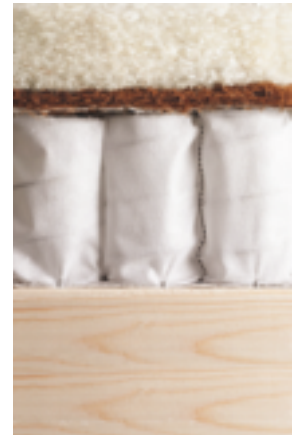
## ELITE DIVAN SET

**Elite** is where it begins in the Vispring range and with some very impressive levels of wool and cotton upholstery and the super quality of materials used this mattress really packs a punch above and beyond other similar priced options by other bed manufacturers. This mattress has been designed to rest perfectly on the Vispring **Deluxe sprung divan base** with **650 pocket springs\***. This sprung divan base helps the mattress springs work to their full potential giving you the best comfort and support possible.

Choose from soft, medium, firm or extra firm spring tension.

Partner with any Vispring headboard and choose the perfect fabric.

Optional storage is available with this bed.





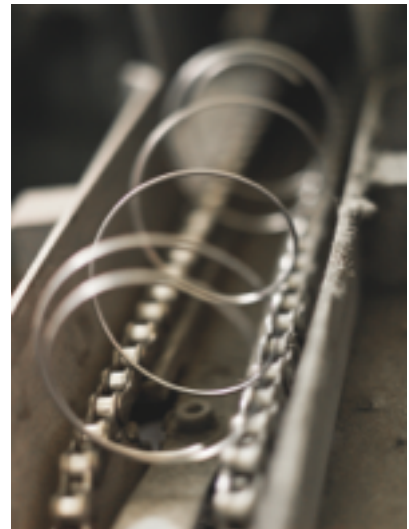
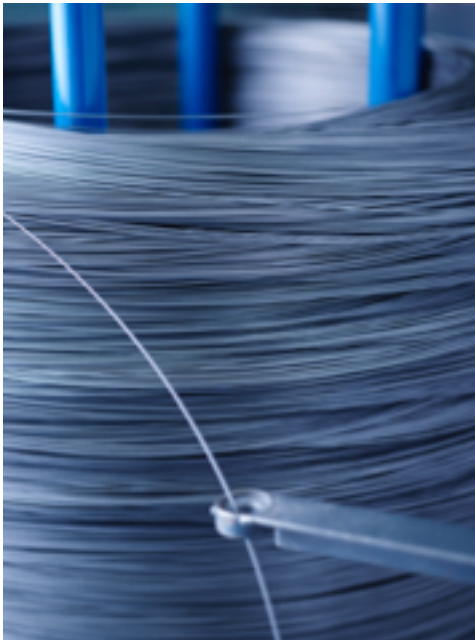
Elite  
—  
VISPRING  
Luxury Beds - London 1901

# SPRING PRODUCTION

Vispring invented the pocket spring in 1901 and is the only bed manufacturer to produce their own springs from the finest Vanadium steel.

Choose from four different spring tensions (soft, medium, firm, extra firm).

Each spring is enclosed in natural cotton calico pockets for excellent breathability.





## HAND-NESTING OF THE POCKET SPRINGS

Vispring craftsmen hand-nest the pocket springs in a honeycomb pattern that maximises the support in each mattress.

The pocket springs work independently (as a result of not being glued), gently supporting you as you sleep.

## GENUINE HAND SIDE-STITCHING

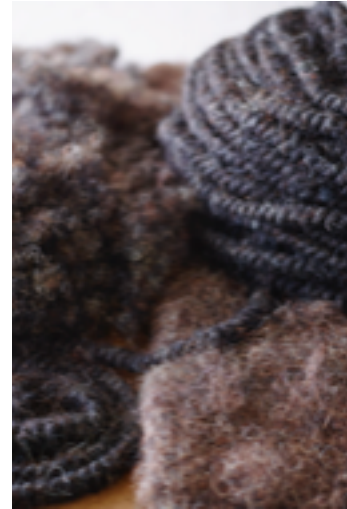
It is an intricate technique that craftsmen take many years to master, providing perfect edge to edge support and improving mattress longevity.

Every bed is made exclusively with up to six rows of genuine side-stitching, using 100% natural twine and providing thousands of contact points in the rows between mattress border and springs. As a result, there is no need for a metal rod edge that would reduce the independence of the springs and comfort.

It can take up to 8 hours to hand side-stitch a mattress.







## SELECTION OF THE FINEST NATURAL FILLINGS

Throughout the entire range, Vispring uses the most luxurious natural fillings, sourced from around the world: silk, cashmere, bamboo, mohair, horsetail, wool and cotton.

Adding horsetail to a bed is like giving it millions of extra springs. Wool is soft, hypo-allergenic, breathable, and ten times more absorbent than synthetic materials. These tried and tested ingredients among others help to regulate the temperature in your bed and provide you with a consistent sleeping surface.

# ASSEMBLY OF THE FILLINGS

Vispring uses extremely generous quantities of natural fillings: pure 100% British fleece wool is blended with the finest horsehair, the softest silk, cashmere, and mohair, to cushion and support.

All of these sumptuous fillings are hand teased to give greater resilience and loft allowing air to move freely and the bed to breathe.

Vispring mattresses are typically filled with wool from at least four full fleeces. Far more than any other bed maker.



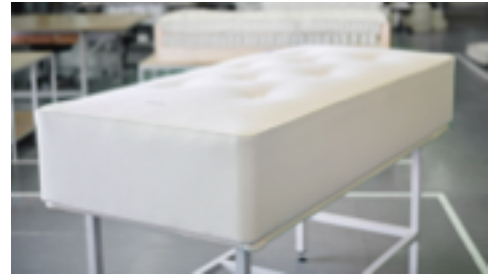
# HAND TUFTING

## THE MATTRESS

Carefully judged tuft lengths create the signature voluptuously contoured surface without compromising comfort.

Evenly distributed over the surface, tufts hold the natural fillings in position without the need for metal rods used in less luxurious beds.





## DIVAN CONSTRUCTION

A quality mattress is only as good as the divan it rests on.

Vispring only uses slow grown Scandinavian softwood and hardwood to construct its timber frames. Every joint is glued and screwed for added strength.

Fully pocket sprung, fully upholstered, and with edge to edge support, the Vispring divan partners your choice of mattress perfectly to give the ultimate support and comfort.

Optional storage drawers are available, utilising otherwise lost space under the bed. You may also like the option of a stylish shallow or low sprung divan with a variety of legs.



## THE PERFECT CHOICE

We spend a third of our lifetime in bed. Choosing the right VISPRING bed could be the best decision you make.

### **The comfort promise.**

If you feel you've chosen the wrong comfort grade of mattress, we give you up to 90 nights to test and tell us. We'll exchange it for a small fee\*.

Speak to our VISPRING specialists about this model...

*\*Some restrictions do apply to please ask us about these.*

# LEGS AND CASTORS

PRACTICAL AND STYLISH



## Shephard Castors

Comes as standard with any low or deep sprung divan set



## Locking Castors

Optional extra with any low or deep sprung divan set



## Tapered Wood Legs

Available heights; 13cm, 15cm, 18cm, 23cm.  
Available colours; Natural, mahogany, steel, ebony



## Corner Metal Bronze Legs

Optional extra with any shallow sprung divan set. Height; 15cm

Vispring legs and castors are build to withstand many years use.

Shephard castors are the best available and glide easily, locking castors are recommended for hard floors. Tapered legs come in varying heights and finishes and if you are after a touch of luxury, compliment your shallow divan with our designer Bronze Metal legs.

# OPTIONAL EXTRAS

## THE FINISHING TOUCHES



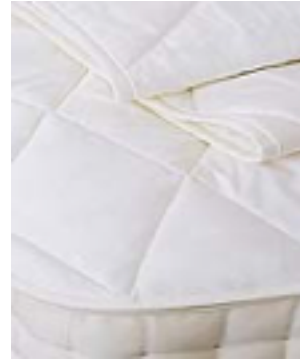
### Divan Mantle

Complete the look of your Superking or Emperor size divan set and hide the divide.



### Divan Skirt

Add a touch of class to your new divan set and hide unsightly castors.



### Mattress Protector

Protect your investment with a quilted wool mattress protector pad.



### Zip and Link Options

Upgrade your Kingsize, Superking or Emperor size divan or mattress to Zip and Link.

## DRAWERS

Drawers add valuable storage space, and are smooth running, meticulously upholstered, and built to cabinet standards with dovetail joints.



# OUR PROMISE TO YOU...

Care and attention from our experienced team with unrivalled expert advice and guidance.

## Quality

Carefully selected products from the World's leading brands made to the highest standards without exception.

## Service

Award-winning customer service from our experts with unbiased knowledgeable advice.

## Value

The best most reliable furniture available at prices to suit every budget. Always competitively priced. No gimmicks.

## The Bed Specialist

106 Huish, Yeovil, Somerset, BA20 1AQ

Tel: **01935 423 596**

Email: [info@thebedspecialist.co.uk](mailto:info@thebedspecialist.co.uk)

Web: [www.thebedspecialist.co.uk/vispring](http://www.thebedspecialist.co.uk/vispring)

